

Leaving your home country & arriving in New Zealand / Aotearoa

1 NZ Visa processing time

The time it takes to process a work visa can vary, depending on the type of visa you applied for and the current legislation. (1-6month)

We always recommend working together with a licensed immigration adviser.

[Immigration NZ website](#)



2 NZQA - qualification assessment (if applicable)

NZQA's International Qualifications Assessment (IQA) service assesses overseas qualifications against the New Zealand Qualifications Framework (NZQF) to determine their level and comparability with similar qualifications in New Zealand. (approximately - 16 weeks to process)

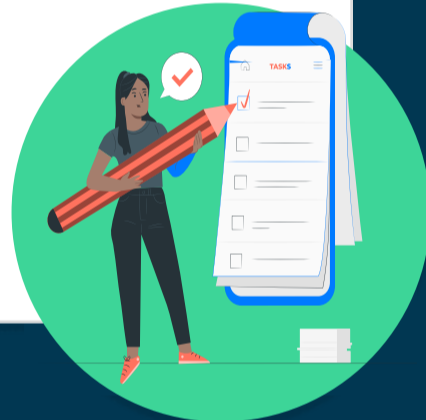
[NZQA website](#)



3 Home country todos

- Taxation,
- Social security payment,
- Childcare/ school (notification of moving abroad)
- Family allowances
- Power of attorney
- Bank accounts (if you keep it, don't forget to report foreign use!)

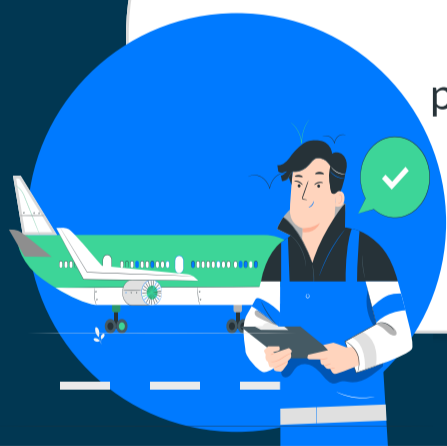
Always check with your local authorities.



4 Airplane rules

Check the airline's current regulations and the destination country's consulate, which might include prohibited items, luggage weight and size restrictions, or health-related requirements.

Children's food is generally allowed.

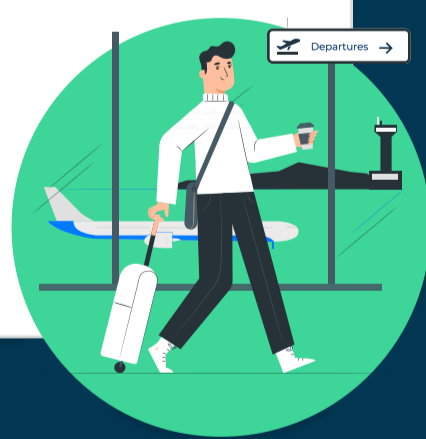


5 NZ biosecurity upon arrival

New Zealand's biosecurity system is designed to prevent the introduction and spread of pests and diseases into the country to protect its unique environment, economy, and human health.

Make sure all your shoes are clean (free of mud).

[NZ biosecurity site](#)



6 Copies to keep with you

- Passport
- visa (e-visa/paper)
- flight tickets
- hotel reservations
- travel insurance
- travel plans
- medical papers or descriptions of medicine
- any other necessary permits or documents

